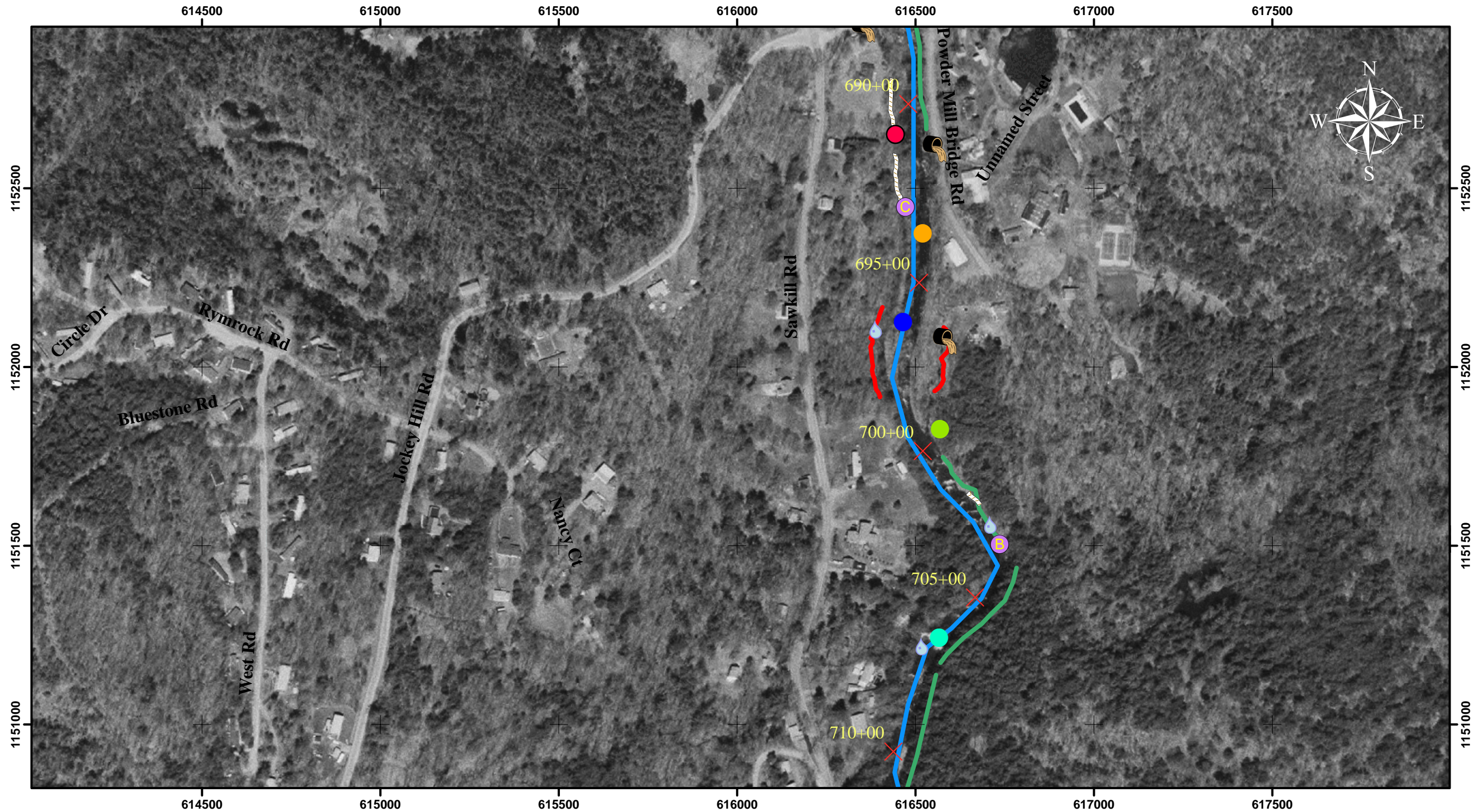


# Sawkill Creek

## Stream Corridor Inventory

(River Mile 13.07 - 13.45, Station 690+00 - 710+00)

- Legend**
- Stream Type Change
  - Debris Jam
  - Channel Bottom
  - Clay Exposure
  - Dam
  - = Bridge
  - ⦿ Outfall
  - Tributary
  - Bedrock Point
  - Knotweed
  - Photo Point
  - Misc. Points
  - Exposed Bank
  - Bedrock
  - Cut-off Channel
  - Other Line Features
  - Stream
  - Log\_Cribbing
  - = Berms
  - Rip\_Rap
  - ▨ Walls
  - ▲ River Miles
  - × Stream Stationing



Aerial photography was obtained from the NYS GIS Clearing House (April 2004)  
 Note: Mapping is in the New York State Plane East Zone  
 Coordinate System in US Feet, using North American Datum of 1983

