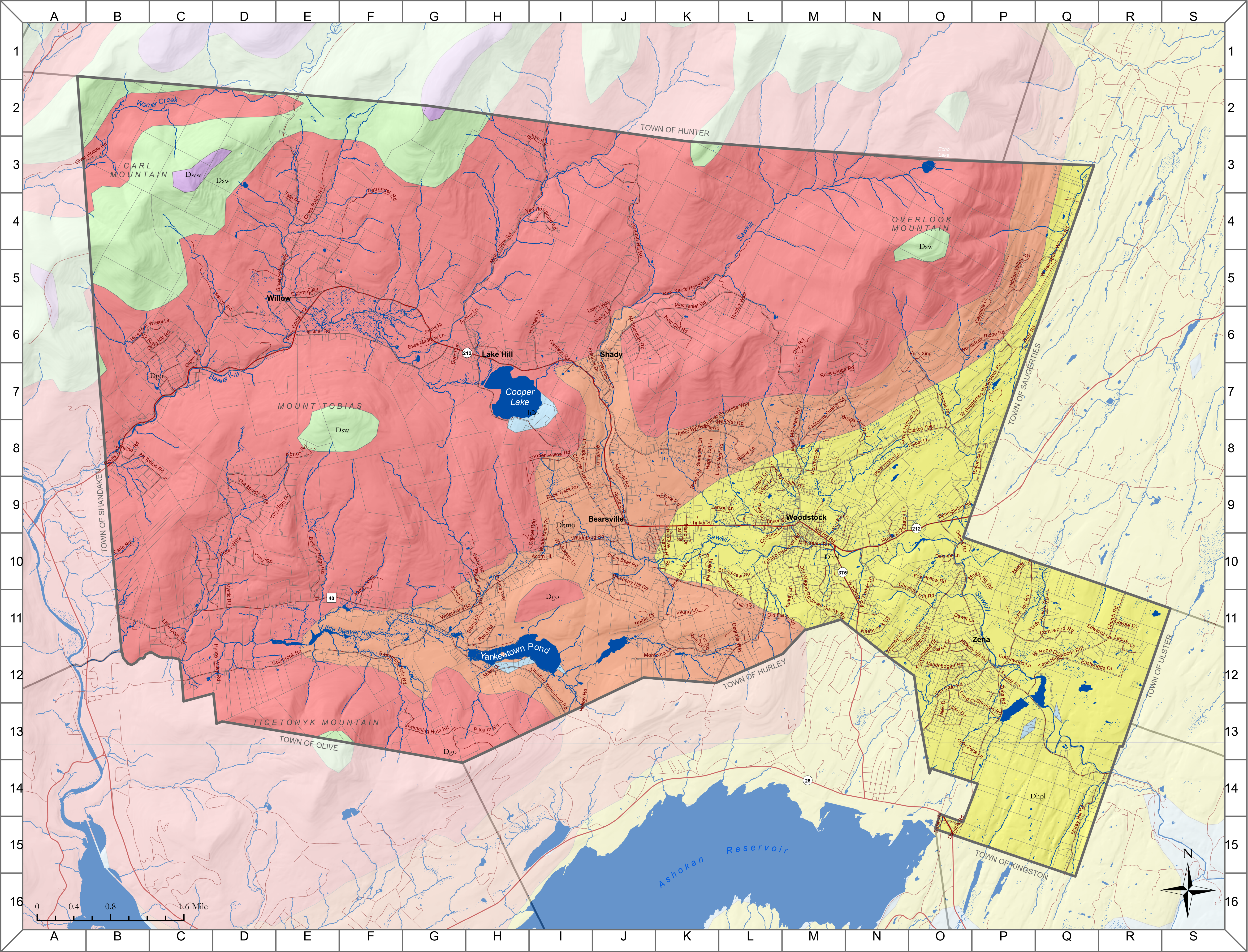


# 5. Bedrock Geology



- State/US Highway
- Local Street
- River/Stream
- Wetland
- Open Water

- Bedrock
- Bedrock Geology Formation - Primary Materials
- Oneonta (Dgo) - Shale, sandstone, Conglomerate
  - Moscow (Dhmo) - Shale, Sandstone
  - Plattekill (Dhpl) - Sandstone, Shale
  - Lower Walton (Dsw) - Sandstone, Conglomerate, Shale
  - Upper Walton (Dww) Sandstone, Shale, Conglomerate
  - Water (h20)

**Data Sources:** *Roadways:* ESRI North American Detailed Streets (2019). | *Towns:* Ulster County (2018). | *Rivers/ Streams/ Waterbodies:* Ulster County (2015). | *Wetlands:* US Fish and Wildlife Service (2012) and Hudsonia Ltd. (2012). | *Bedrock Geology:* NY State Museum (1999).

**Note:** This map is intended for general planning and education purposes and is not a substitute for site-level surveys. The Town of Woodstock Natural Resources Inventory was created with technical assistance from Cornell University, the NYS DEC Hudson River Estuary Program, Ulster County, and the Ashokan Watershed Stream Management Program. Map created December 02, 2020.