

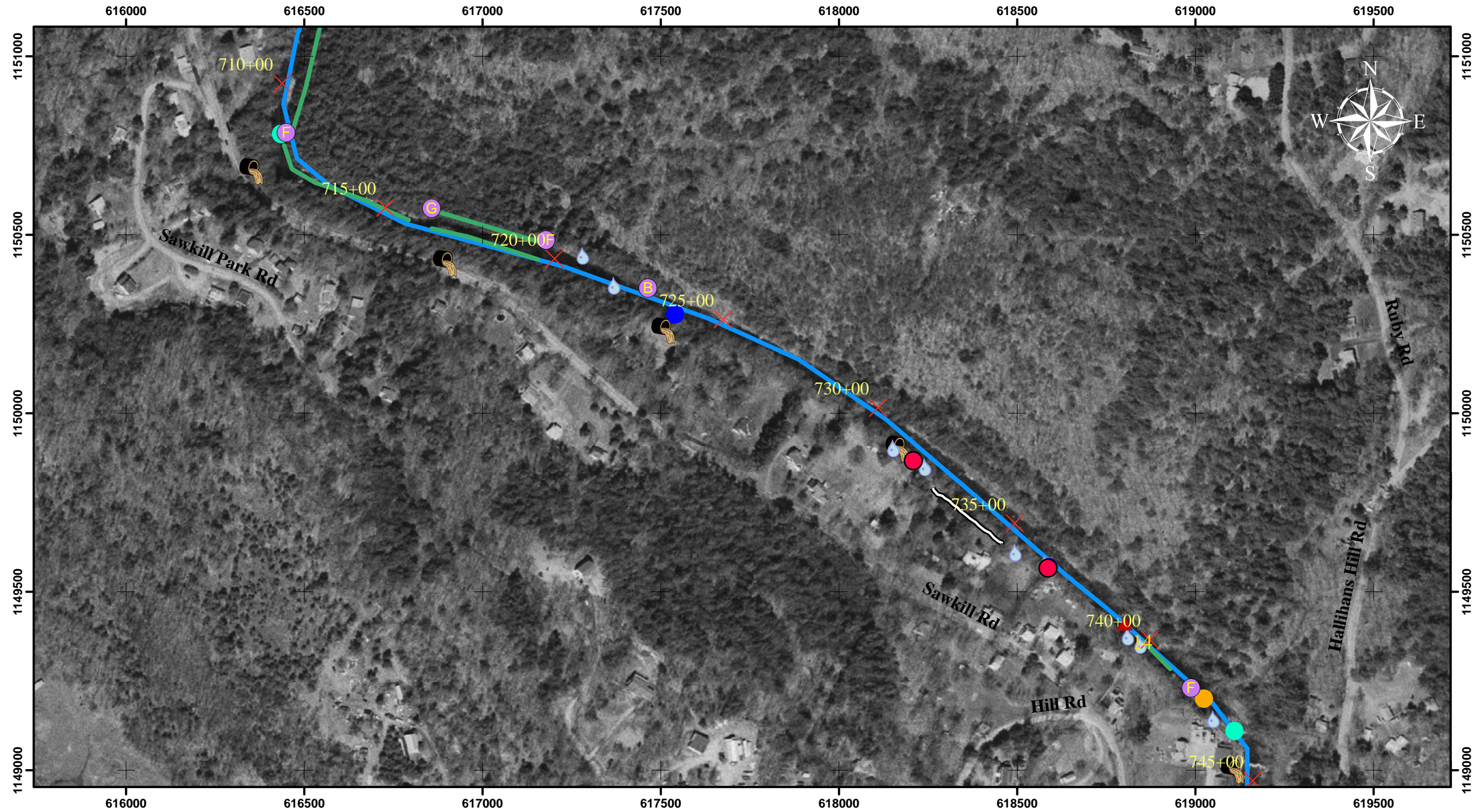
Sawkill Creek

Stream Corridor Inventory

(River Mile 13.45 - 14.11, Station 710+00 - 745+00)

Legend

- Stream Type Change
- Debris Jam
- Channel Bottom
- Clay Exposure
- Dam
- Bridge
- Outfall
- Tributary
- Bedrock Point
- Knotweed
- Photo Point
- Misc. Points
- Exposed Bank
- Bedrock
- Cut-off Channel
- Other Line Features
- Stream
- Log_Cribbing
- Berms
- Rip_Rap
- Walls
- ▲ River Miles
- × Stream Stationing



Aerial photography was obtained from the NYS GIS Clearing House (April 2004)
 Note: Mapping is in the New York State Plane East Zone
 Coordinate System in US Feet, using North American Datum of 1983

