

# SIGNIFICANT HABITATS IN THE TOWN OF WOODSTOCK, NY

## (Sheet 1, Northwest)

- Town boundary
- Road
- ? Question
- Developed areas & non-significant habitats

### Upland Habitats

- Upland hardwood forest (uhf)
- Upland mixed forest (umf)
- Upland conifer forest (ucf)
- Oak-heath barren (ohb)
- Upland shrubland (us)
- Upland meadow (um)
- Orchard/plantation (or/pl)
- Cultural (c)
- Unvegetated talus (clt)
- Waste ground (wg)
- Crest, ledge, & talus
- Calcareous crest, ledge, & talus
- Mountain laurel thicket

### Wetland Habitats

- Hardwood and shrub swamp (hs)
- Mixed forest swamp (ms)
- Conifer swamp (cs)
- Circumneutral bog lake (cbl)
- Intermittent woodland pool (iwp)
- Marsh (ma)
- Wet meadow (wm)
- Calcareous wet meadow (cwm)
- Open water (ow)
- Constructed pond (cp)
- Buttonbush pool
- Heath swamp
- Seep
- Stream
- Spring



Hudsonia Ltd.  
P.O. Box 5000  
Annandale, NY 12504  
[www.hudsonia.org](http://www.hudsonia.org)

### An important caution:

This map is suitable for general land-use planning, but is not suitable for detailed planning and site design, or for jurisdictional determinations (e.g., for wetlands). Boundaries of wetlands and other habitats depicted here are only approximate.

Habitats were identified through map analysis and aerial photograph interpretation, and as many locations as practicable were field-verified. Mapping and field work were done primarily by Hudsonia biologists Ingrid Haackel and Othaniel Vazquez Dominguez. Color infrared photographs in the USGS NAPP series, taken in spring 1994, 1995, and 1997 (scale 1:40,000), were used for stereoscopic photo-interpretation. Habitats were digitized onscreen over color infrared orthophoto images taken in spring 2000 and 2009 obtained from the New York State GIS Clearinghouse. The report prepared in conjunction with these maps (Haackel et al. 2012) explains the habitat identification and mapping methods, describes the ecological significance of each habitat type, and offers conservation recommendations.

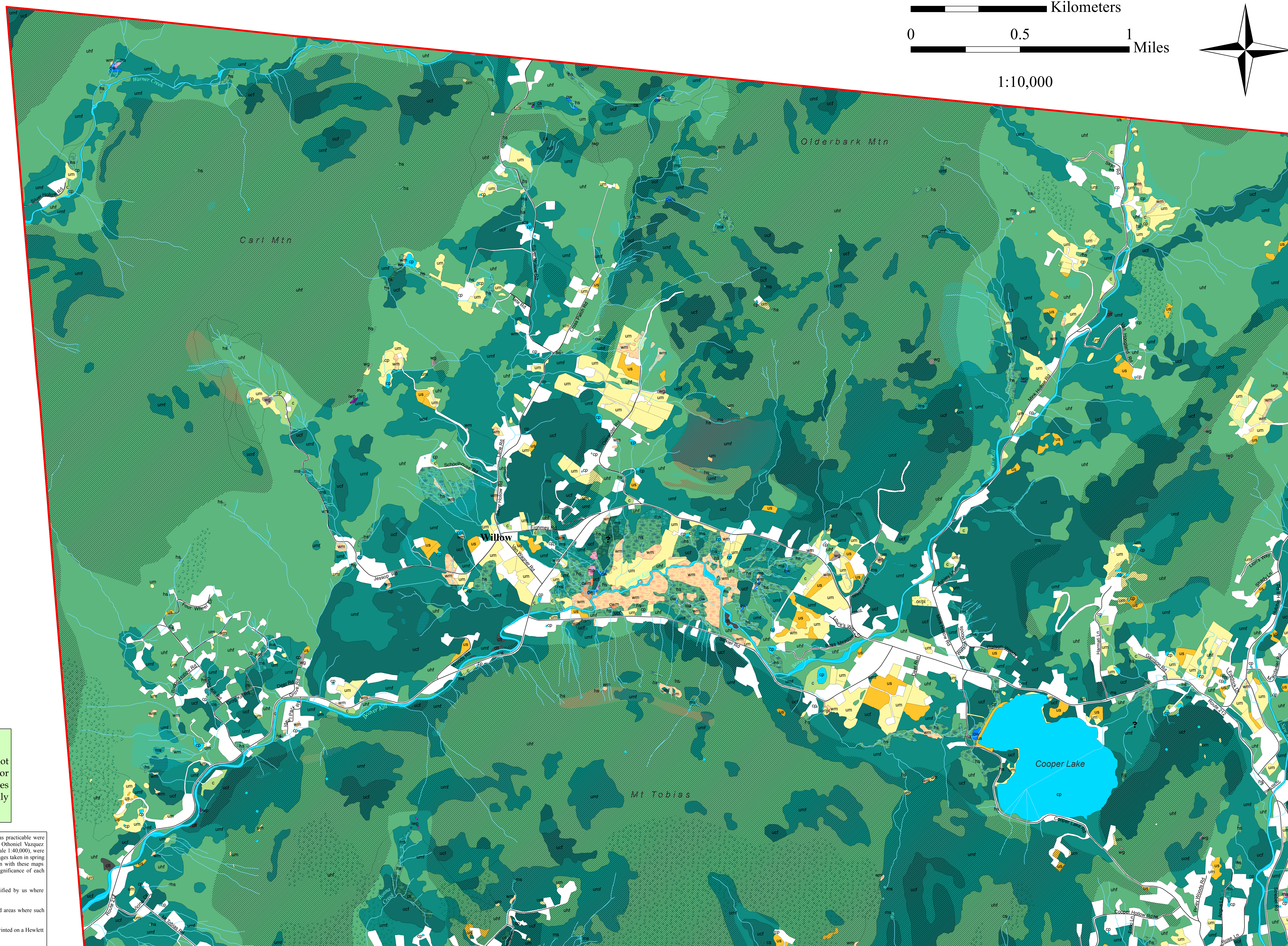
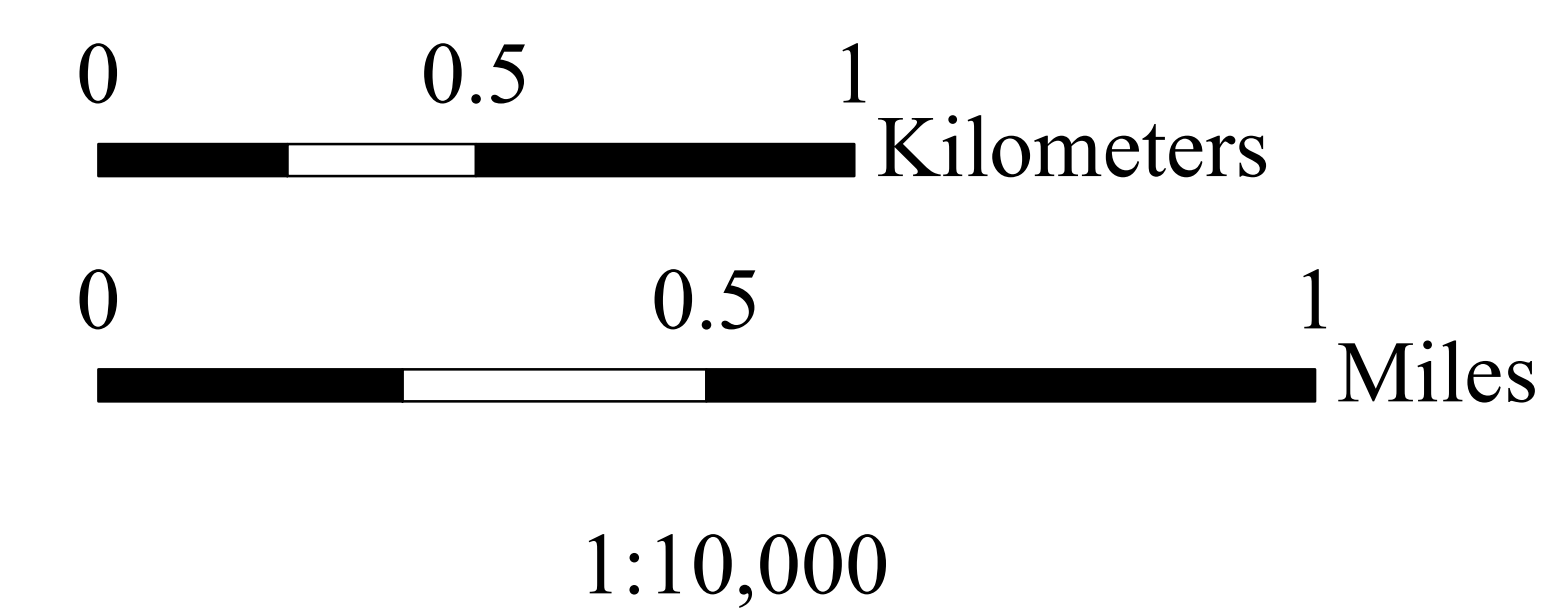
Road locations and names were obtained from the New York State GIS Clearinghouse website and modified by us where necessary.

Some habitat types can only be identified in the field. Question marks on the map indicate some unchecked areas where such habitats may occur, or other ambiguous areas that we were unable to visit.

This map was created using ArcGIS Desktop 10 and 10.1 software on a Toshiba Satellite P775 computer and printed on a Hewlett Packard DesignJet 800PS plotter.

Funds for this project were provided to the Town of Woodstock by the New York State Department of Environmental Conservation, the Ashokan Watershed Stream Management Program, and the Catskill Watershed Corporation.

For more information contact Ingrid Haackel or Gretchen Stevens, Hudsonia Ltd., 845-758-7053.



(Continued on Sheet 2)

(Continued on Sheet 3)