



# CATSKILL MOUNTAIN RR

## West Hurley Woodstock Station and Connecting Trolley Bus Service



**June 2025**



# CATSKILL MOUNTAIN RR

## West Hurley Woodstock Station







# CATSKILL MOUNTAIN RR

## West Hurley Woodstock Station





# CATSKILL MOUNTAIN RR

## West Hurley Woodstock Station





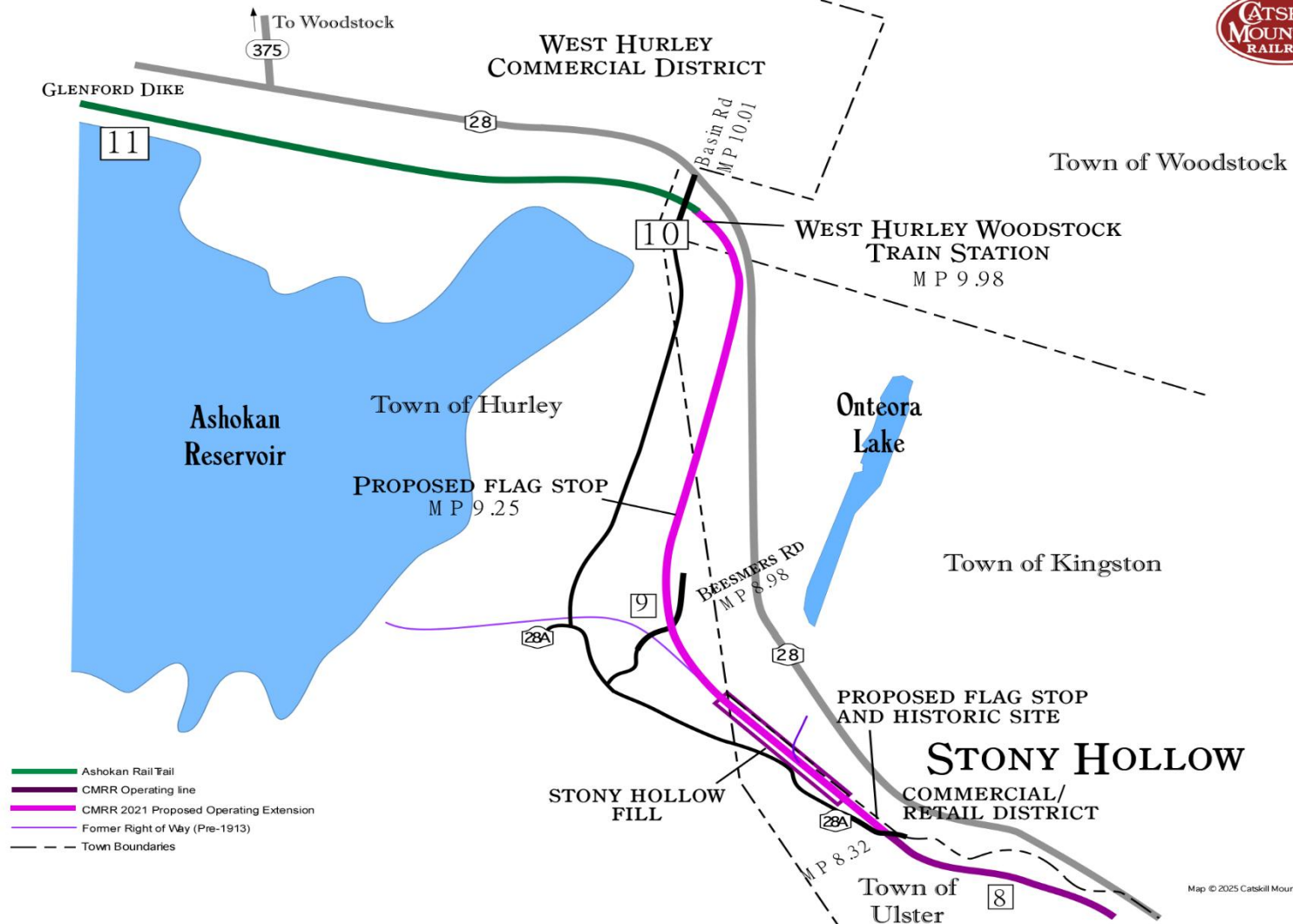


# Executive Summary

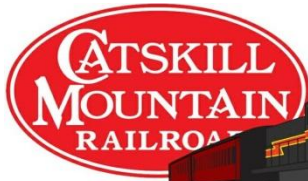
- The CMRR, in partnership with a local landowner, plans to build the West Hurley Woodstock Train station just east of Basin Road and Route 28, the first new train station to be built in Ulster County in over 100 years.
- The station will replace the former West Hurley station which was torn down in 1967 and was located 1,000 feet west of the proposed new station location.
- The station will be the western terminus of the Catskill Mountain Railroad's Kingston operation, and will bring the CMRR's 50,000 plus tourists via train to this location.
- Visitors can detrain to use the Ashokan Rail Trail, but also board a local trolley service similar to the one that currently operates in the Town of Hunter in Greene County, to take tourists and residents to Woodstock stopping along the way at local businesses in West Hurley. Per Ulster County Tourism tourists spend \$59/person on day trips and \$125/person at night.
- The new Train Station will provide for a much safer signaled entrance to the Ashokan Rail Trail than the current one in West Hurley, and will revitalize a blighted and underutilized intersection of Route 28 with Zena Road and Basin Road.
- The Station will be a hub of economic activity that will greatly benefit the Towns of Hurley, Woodstock and Kingston, and will operate year-round.
- The station will be paid for by the CMRR, NYSDOT and the local property owner. Increased property and sales taxes will accrue to the Town of Woodstock.
- The combination of the train and the Trolley will greatly reduce traffic congestion along Route 28 and in the Village of Woodstock.



# CATSKILL MOUNTAIN RAILROAD



Map © 2025 Catskill Mountain Railroad Company



# Catskill Mountain Railroad

- The **Catskill Mountain Railroad** (CMRR), is a heritage railroad based in Kingston, NY, that began operations in 1982 and runs from Kingston to Stony Hollow.
- The CMRR is employee owned and is dedicated to preserving the history and operation of the former Ulster and Delaware Railroad. The CMRR's operating profits are reinvested back into the preservation of the Ulster and Delaware Railroad corridor and into building and maintaining our trains.
- The CMRR carried 60,653 riders in 2024, 85.7%, or 51,953 of whom were from outside Ulster County.
- The CMRR employs 4 full time staff, 35 part time, and 90 seasonal staff (mostly Kingston High School Students). The CMRR's payroll was over \$570,000 in 2024 and revenues were over \$2 million.





# West Hurley Woodstock Train Station

- The West Hurley Woodstock Train Station will provide a direct rail connection between the Ashokan Rail Trail and Kingston, bringing thousands of new visitors via the CMRR to the ART and the Towns of Kingston, Ulster, Hurley and Woodstock, creating a destination attraction far greater than the CMRR and the ART are alone.
- The CMRR will run regular rail shuttle service the “Ashokan Express” from Kingston up the hill to the Station on a two-hour turnaround.
- The CMRR will provide a connecting trolley bus service from the station to local West Hurley businesses and the Village of Woodstock.
- Westbound site access is from the stoplight on Route 28 at Basin/Zena Road. This is a much safer way to access to the ART’s Woodstock Dike Trailhead than the current entrance on Route 28.
- The increased property taxes and sales taxes from the site will accrue to the Town of Woodstock.







# Kingston-West Hurley Ashokan Express

- The CMRR plans to institute regular rail shuttle service the “Ashokan Express” from 9am to 5pm from Kingston Plaza to the Woodstock West Hurley Train Station on 2-hour intervals.
- The Shuttle service will transport not only tourists, but also Ulster County residents through a special discounted fare. A dedicated car will be reserved for passengers who wish to bring their bicycles to save them the steep uphill climb from Kingston to West Hurley.
- Both tourists and residents can detrain at the West Hurley Woodstock Train Station to travel further to the Ashokan Rail Trail. If they don't bring their bikes, they can rent one at the Station.





# CMRR Trolley Service

## West Hurley and Woodstock

- For those who instead want to visit local businesses and cultural sites in West Hurley and Woodstock, the CMRR will provide a trolley tourbus service that will connect with the “Ashokan Express” Rail Shuttle.
- The service would be patterned on the highly successful Kaaterskill Trolley that runs from Palenville to Tannersville in the Town of Hunter.
- The Trolley service would allow both Tourists and Residents the opportunity to explore and utilize local businesses within a 15-minute ride from the West Hurley Woodstock Train Station. It can be equipped with a bike rack and has handicap accessibility.
- The CMRR has had extensive experience with this kind of shuttle service in our former operations in Phoenicia which shared a bus and train shuttle service with the former Town Tinker Tube Rental.







# CMRR Trolley Service

## West Hurley and Woodstock







# Trolley Service - West Hurley

- The CMRR Trolley service would have a route that would connect the West Hurley Woodstock Train Station with the following establishments in West Hurley:
- Reservoir Inn
- Maverick Concert Hall
- Santa Fe Mexican Restaurant
- Hotel Dylan
- West Hurley Commercial District

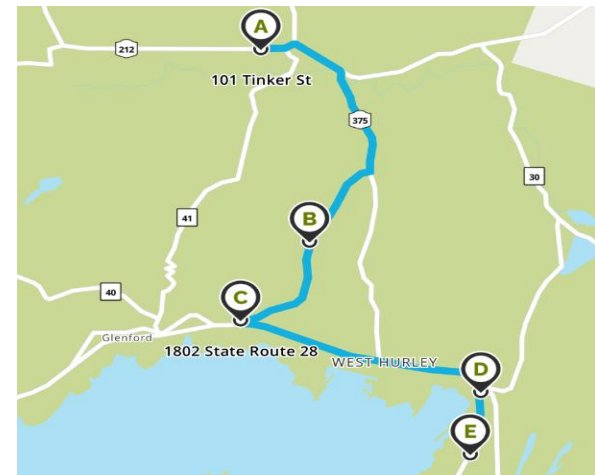






# Trolley Service - Woodstock

- The Trolley would continue on to Woodstock to stop at similar establishments. The service would reduce traffic and parking congestion in the Village of Woodstock just as it currently does between Palenville and Tannersville.
- The Trolley will be equipped with a bike rack to take Woodstock and West Hurley bicycle enthusiasts directly to the West Hurley Woodstock Train Station where they can either ride the Ashokan Rail Trail or continue on the train with their bikes to Kingston. They can avoid traveling by bike on dangerous local roads and across Route 28.
- The Trolley route would be timed to meet the Rail Shuttle Service at the West Hurley Woodstock Train Station and be utilized by both residents and tourists.
- The Trolley will also allow the 50,000 plus tourists that the CMRR brings to Ulster County every year to spend money in local businesses in West Hurley and Woodstock without adding to existing traffic congestion.
- The Trolleys can also be used for special events in Hurley and Woodstock.





# West Hurley Woodstock Train Station

- The West Hurley Woodstock Train Station, set to a historic design, will include the following amenities:
  - Ashokan Rail Trail, West Hurley, Woodstock and Catskill Mountains Scenic Byway Information
  - Ulster County Tourism information and UCAT Stop
  - Public indoor bathrooms
  - Event space for the ART and the Railroad, with a covered area and electric source.
  - Commercial retail space (food and drink, bicycle repair and rental, or other convenience uses)
  - A ticket office for the CMRR.
  - Connecting Trolley Service to West Hurley and Woodstock.
  - Station will be paid for by the CMRR, NYSDOT and the local property owner.

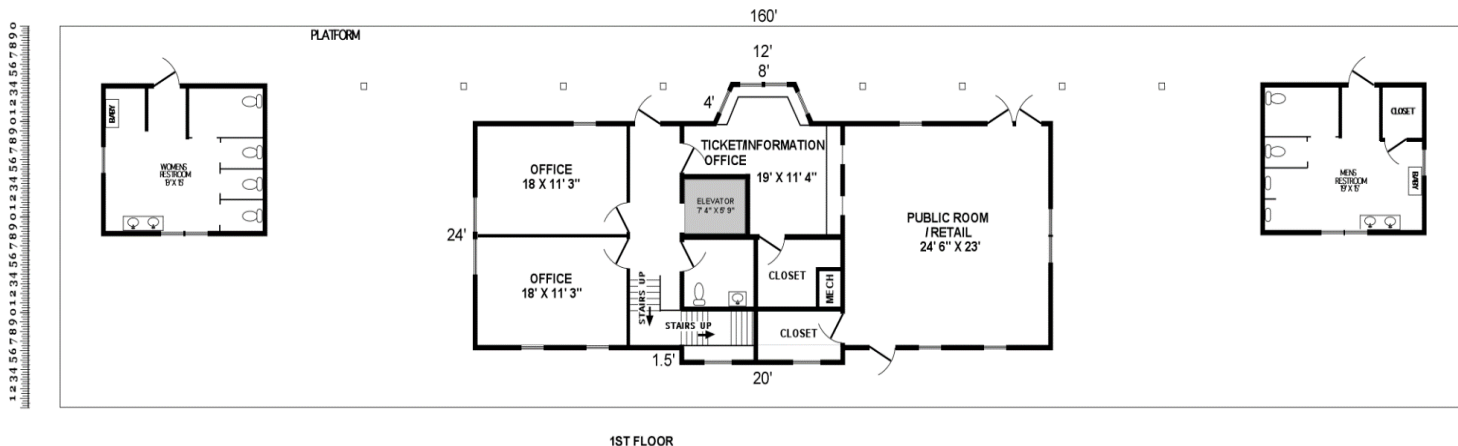






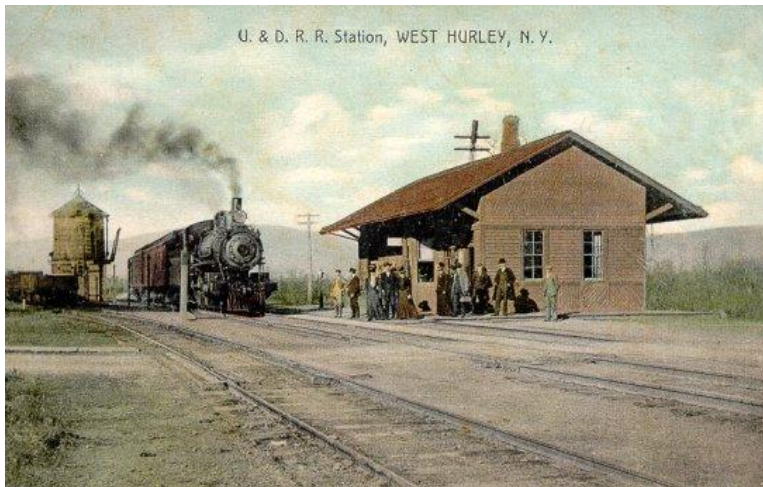
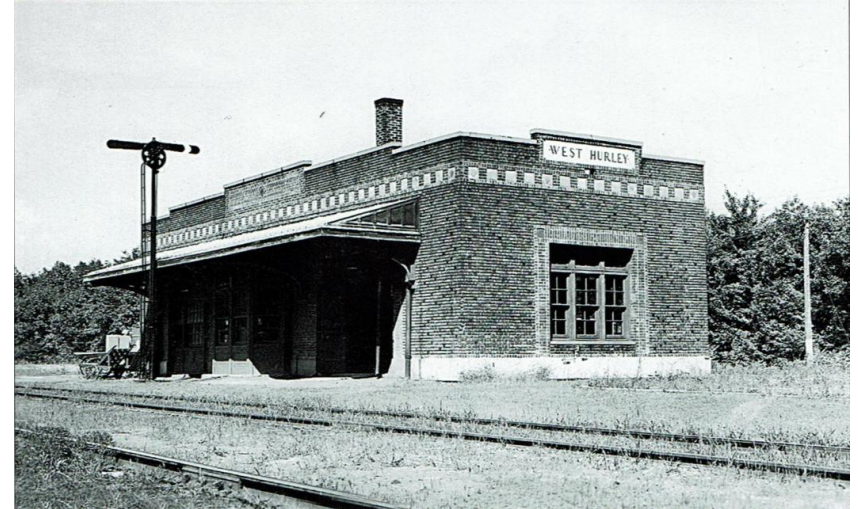
# West Hurley Woodstock Train Station

- The inclusion of indoor bathrooms will allow the West Hurley Woodstock Train Station to be listed on the “Attractions” signs on the New York State Thruway.
- Parking facilities can also contain bicycle racks and electric car charging stations.
- Facility will be a local hub and event center for tourists and residents, and will jumpstart redevelopment of the blighted Route 28/Zena/Basin Road intersection.
- In 2024, the CMRR was awarded a \$667,000 NYSDOT grant to develop the site.
- The Station will also serve as the North Pole for the CMRR’s Polar Express and the Hogwarts School for the upcoming Harry Potter Hogwarts Express.
- Increased property taxes and sales taxes on bike rentals and retail concessions will accrue to the Town of Woodstock.





# Historic West Hurley and Woodstock Train Stations



Historic Ulster & Delaware stations:  
Above – Second West Hurley Station – MP 10.2  
Above Left – Woodstock Station – MP 11  
Lower Left – Original West Hurley Station – MP 9.8 (now under the Ashokan Reservoir)





# Sustainability

- The CMRR extension plan to Basin Road, combined with its connecting trolley service will reduce traffic congestion and pollution on Route 28 from Kingston to West Hurley.
- The CMRR Trolley Service will also reduce traffic congestion and pollution between the Station, West Hurley and the Village of Woodstock.
- The CMRR has recently converted its locomotives to 100% biodiesel, the first heritage railroad to do so in the United States. The Biodiesel is made from soybeans grown near Syracuse, New York and refined in New Windsor, New York.
- The CMRR was awarded \$2.3 million by NYSDOT in March 2024 to convert one of its engines to a modern “clean diesel” locomotive.





# Rail with Trail

- The CMRR believes that extending the train service from Stony Hollow to the Ashokan Reservoir, combined with extending a parallel trail or “rail with trail” from the Ashokan Reservoir to Kingston is the best policy for the County and the Town of Woodstock to maximize the economic impact from tourists and to provide an amenity for residents.
- The County Legislature is now in the process of hiring an independent consultant/engineer to evaluate the feasibility and additional cost of rail with trail vs trail only.
- The CMRR’s engineer and consultant have produced a large amount of research on the issue which we will be giving to the County’s consultant as part of the due diligence process.
- The CMRR’s consultant has estimated the cost of trail only in the Undesignated Segment as \$2.6 million with rail with trail costing \$3.6 million.
- The CMRR has also identified a NYSDOT grant to build rail-with-trail from Basin Road to Stony Hollow.
- The CMRR has estimated the economic benefits of the extension at \$1.4 million per year for the ART and \$3.4 million for the train, giving an overall cost/benefit ratio of 40 to one.





# Conclusion

- The CMRR believes that its extension to the Ashokan Rail Trail and the connecting trolley bus service will greatly benefit residents of Woodstock.
- The trolley service will reduce parking and traffic problems in Woodstock, by encouraging tourists to use the train and the trolley bus instead of their cars.
- The service will benefit local residents who don't want to worry about parking in Woodstock, and will allow Woodstock residents to safely take their bikes to the ART or Kingston via the Ashokan Express or the future rail with trail.
- Increased property taxes and sales taxes from bike rentals and concessions will accrue to the Town of Woodstock.
- Once the County extends the CMRR's permit to Basin Road, the CMRR can put the extension in service within one year, and the connecting trolley within two years. The project is fully-funded by the CMRR, NYSDOT and a local landowner.
- Trail-only plans will take years to construct and are dependent on federal funding which may be difficult to obtain for the next four years.







# References

- These documents can all be found on the CMRR's website at:  
[www.catskillmountainrailroad.com/cmrr-expansion/](http://www.catskillmountainrailroad.com/cmrr-expansion/)
- [Economic Benefits of Creating a Joint Rail and Trail Terminal at Basin Road and Route 28 – March 2025](#)
- [Highest and Best Use of the U&D Corridor is Rail - February 2025](#)
- [CMRR offer to build Rail with Trail with NYSDOT Grant or directly by CMRR](#)
- [CMRR Proposal for Rock Cut Excavation for Rail with Trail - March 2025](#)
- [CMRR Right of Way Survey from MP 8.33 to MP 10.01](#)
- [CMRR Rock Cut Photos from MP 9.24 to MP 10.01](#)
- [Rail with Trail Setbacks Presented to U&D Corridor Committee - March 2025](#)
- [CMRR Rail with trail Update February 2025](#)
- [CMRR Stony Hollow to Basin Road Extension - December 2024](#)
- [CMRR Rail with Trail Review - October 2024](#)
- [Stone Consulting 2024 Rail with Trail Cost Estimates and Concept Update](#)
- [Video of the RR Corridor from Rt 28A to Basin Rd.](#)
- Copywrite 2025 Catskill Mountain Railroad Co., Inc., PO. Box 1415, Kingston, NY 12401