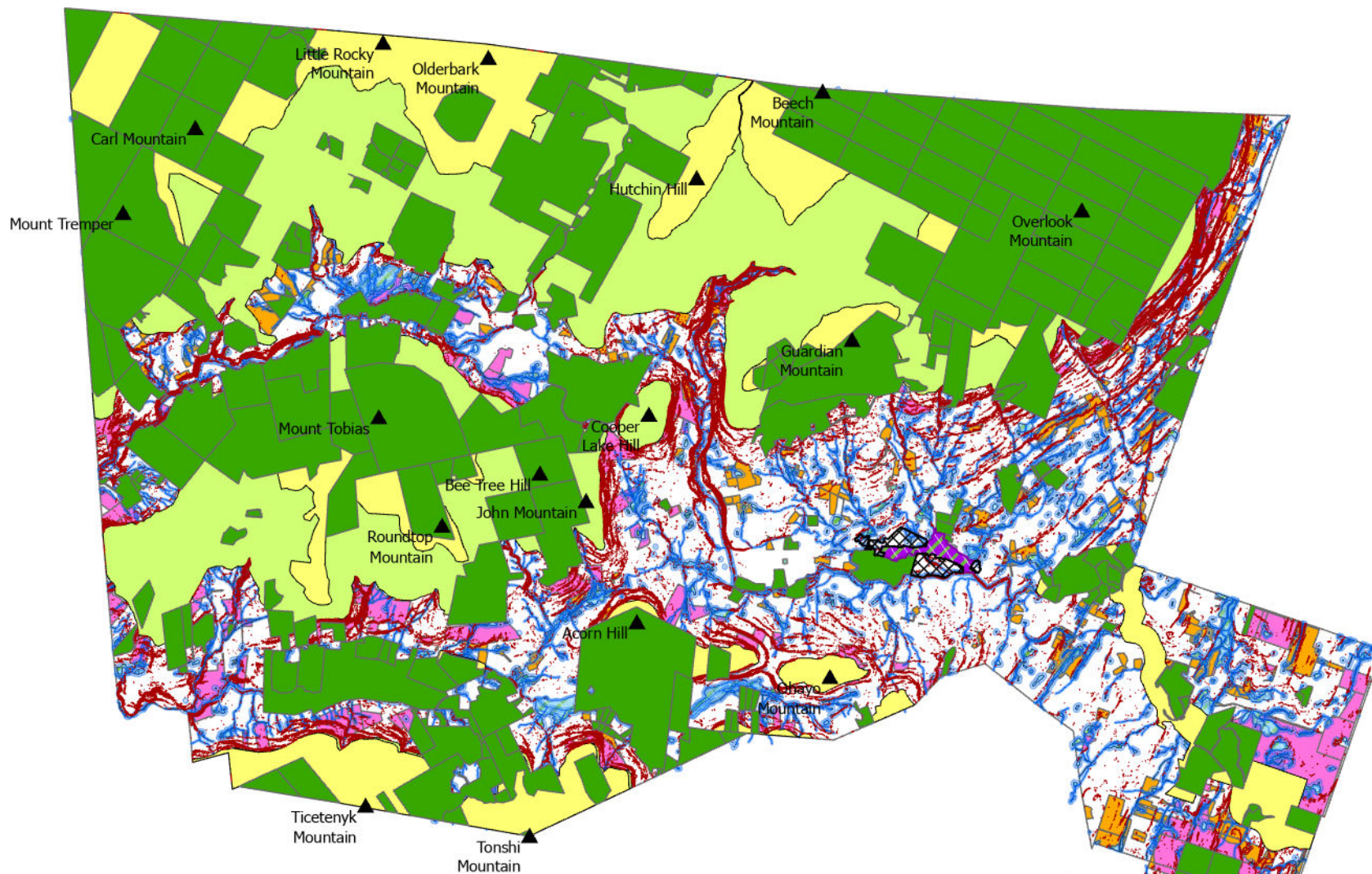


Woodstock, NY  
Vacant Private Lands  
showing all constraints including conservation



## Legend

- |   |   |
|---|---|
| <span style="display: inline-block; width: 15px; height: 15px; background-color: pink; border: 1px solid black;"></span> R5 vacant $\geq$ 5 Acres outside SO  | <span style="display: inline-block; width: 15px; height: 15px; background-color: lightblue; border: 1px solid black;"></span> Wetland and Watercourse Buffers (30-100')   |
| <span style="display: inline-block; width: 15px; height: 15px; background-color: orange; border: 1px solid black;"></span> R3 vacant $\geq$ 3 acres   | <span style="display: inline-block; width: 15px; height: 15px; background-color: darkgreen; border: 1px solid black;"></span> Conserved Lands as of 0124  |
| <span style="display: inline-block; width: 15px; height: 15px; background-color: lightgreen; border: 1px solid black;"></span> R1 Vacant Parcels  | <span style="display: inline-block; width: 15px; height: 15px; background-color: yellow; border: 1px solid black;"></span> R8 Eco_Sensitive   |
| <span style="display: inline-block; width: 15px; height: 15px; background-color: darkred; border: 1px solid black;"></span> Slope $>$ 25 % excl SO and R8   | <span style="display: inline-block; width: 15px; height: 15px; background-color: lightyellow; border: 1px solid black;"></span> Scenic Overlay  |
| <span style="display: inline-block; width: 15px; height: 15px; background: repeating-linear-gradient(45deg, transparent, transparent 2px, blue 2px, blue 4px); border: 1px solid black;"></span> Wetlands | <span style="display: inline-block; width: 15px; height: 15px; border: 1px solid black; position: relative;"> <span style="position: absolute; top: 50%; left: 50%; transform: translate(-50%, -50%);">▲</span> </span> Named Mountains |
| <span style="display: inline-block; width: 15px; height: 15px; border: 1px solid blue;"></span> Hudsonia-delimited Streams  | <span style="display: inline-block; width: 15px; height: 15px; background: repeating-linear-gradient(45deg, transparent, transparent 2px, black 2px, black 4px); border: 1px solid black;"></span> HR Hamlet Residential                |
|   | <span style="display: inline-block; width: 15px; height: 15px; background: repeating-linear-gradient(45deg, transparent, transparent 2px, purple 2px, purple 4px); border: 1px solid black;"></span> H Hamlet Commercial                |

Note: Vacant lands may include minor improvements such as sheds, barns and driveways, but not residential or commercial buildings. Constraints on development include steep slopes, wetlands, watercourses and their buffers, and legal conservation agreements such as easements. Specific site conditions may also constrain development.

Sources of data: Hudsonia Environmental Study; Natural Resources Inventory; Woodstock Wetlands and Watercourses Buffer Law and Map; National Wetlands Inventory; NYDEC; Ulster County Tax Parcel map as of January 2024; Woodstock Scenic Overlay law; US Geological Survey.

Created by Judith Kerman  
Date Created: 4/21/2024