

Sawkill Creek  
Stream Corridor Inventory  
(River Mile 1.33 - 1.70, Station 70+00 - 90+00)

Legend

Stream Type Change

Debris Jam

Channel Bottom

Clay Exposure

Dam

Bridge

Outfall

Tributary

Bedrock Point

Knotweed

Photo Point

Misc. Points

Exposed Bank

Bedrock

Cut-off Channel

Other Line Features

Stream

Log\_Cribbing

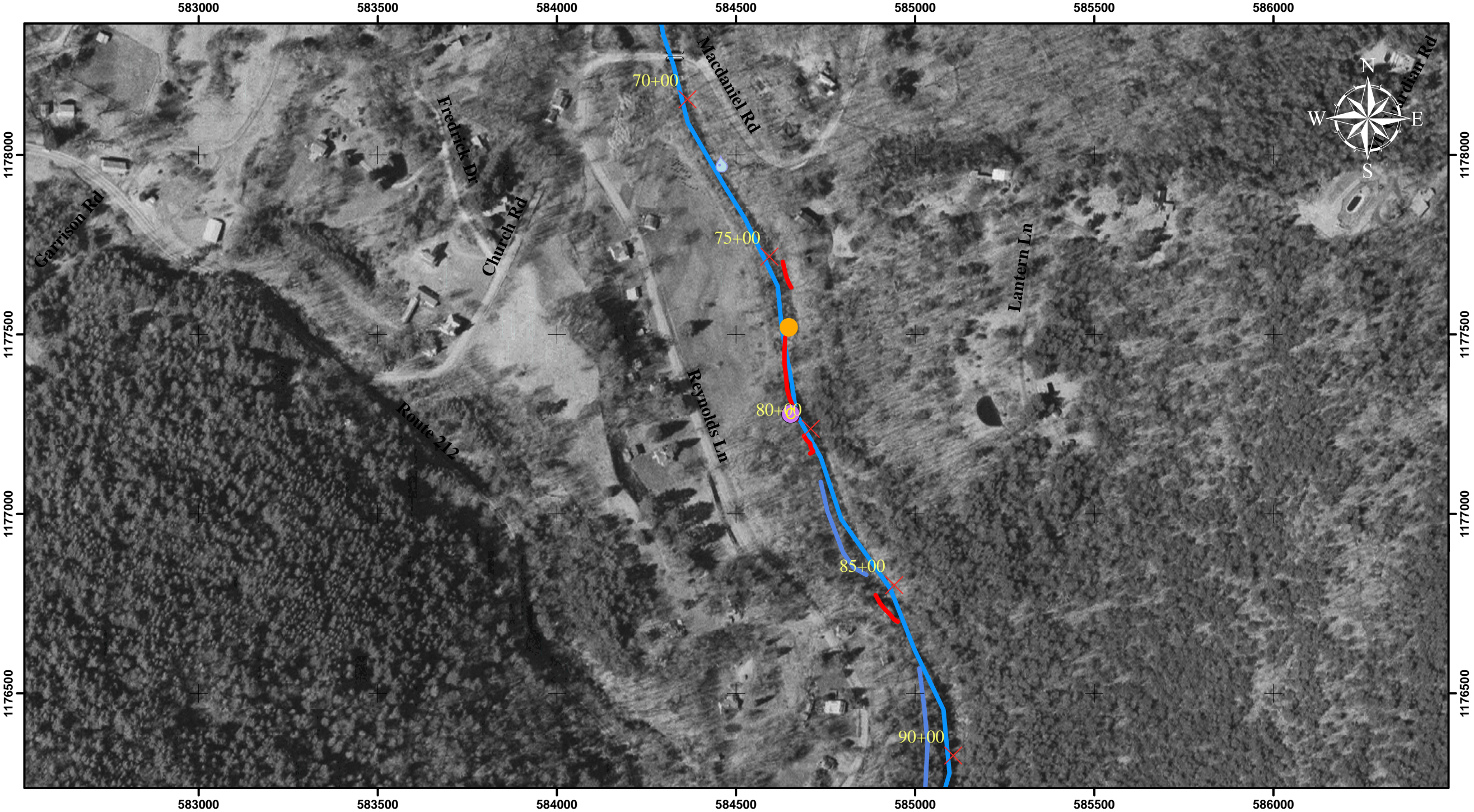
Berms

Rip\_Rap

Walls

River Miles

Stream Stationing



Aerial photography was obtained from the NYS GIS Clearing House (April 2004)  
Note: Mapping is in the New York State Plane East Zone  
Coordinate System in US Feet, using North American Datum of 1983

