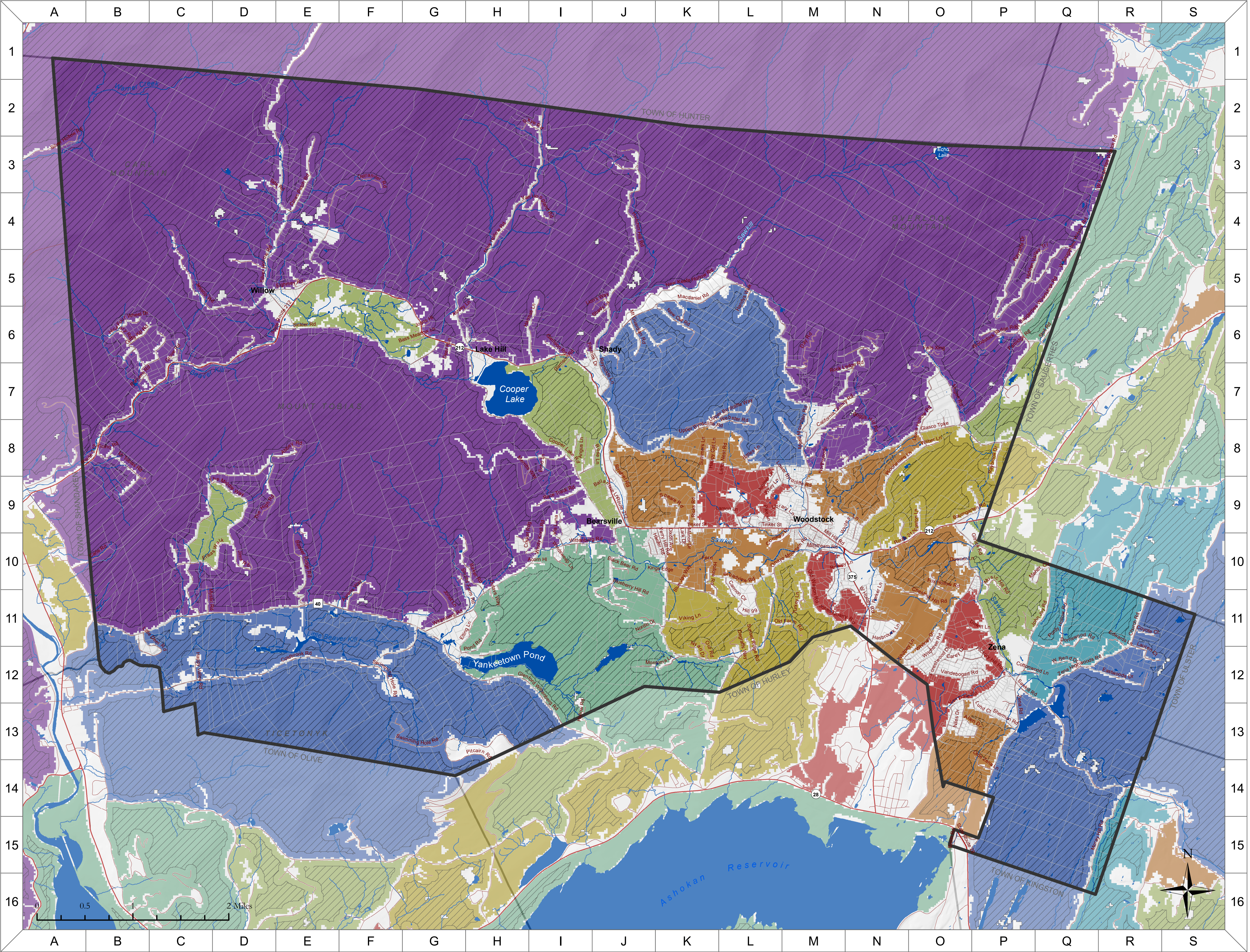


Town of Woodstock
Natural Resources Inventory
19. Large Forests



State/US Highway

Local Street

River/Stream

Open Water

Core Forest >100 acres

Forest Condition Index
Hudson Valley Percentile

99-100 - Top 1%

95-99 -Top 5%

90-95 - Top 10%

80-90 - Top 20%

60-80

40-60

20-40

0-20

Data Sources: *Forest Cores and Condition Index* New York Natural Heritage Program, NYSDEC Hudson River Estuary Program, and Cornell University (2019). | *Roadways:* ESRI North American Detailed Streets (2019). | *Towns:* Ulster County (2018). | *Rivers/ Streams/ Waterbodies:* Ulster County (2015).

Note: This map is intended for general planning and education purposes and is not a substitute for site-level surveys. The Town of Woodstock Natural Resources Inventory was created with technical assistance from Cornell University, the NYS DEC Hudson River Estuary Program, Ulster County, and the Ashokan Watershed Stream Management Program. Map created December 1, 2020.